

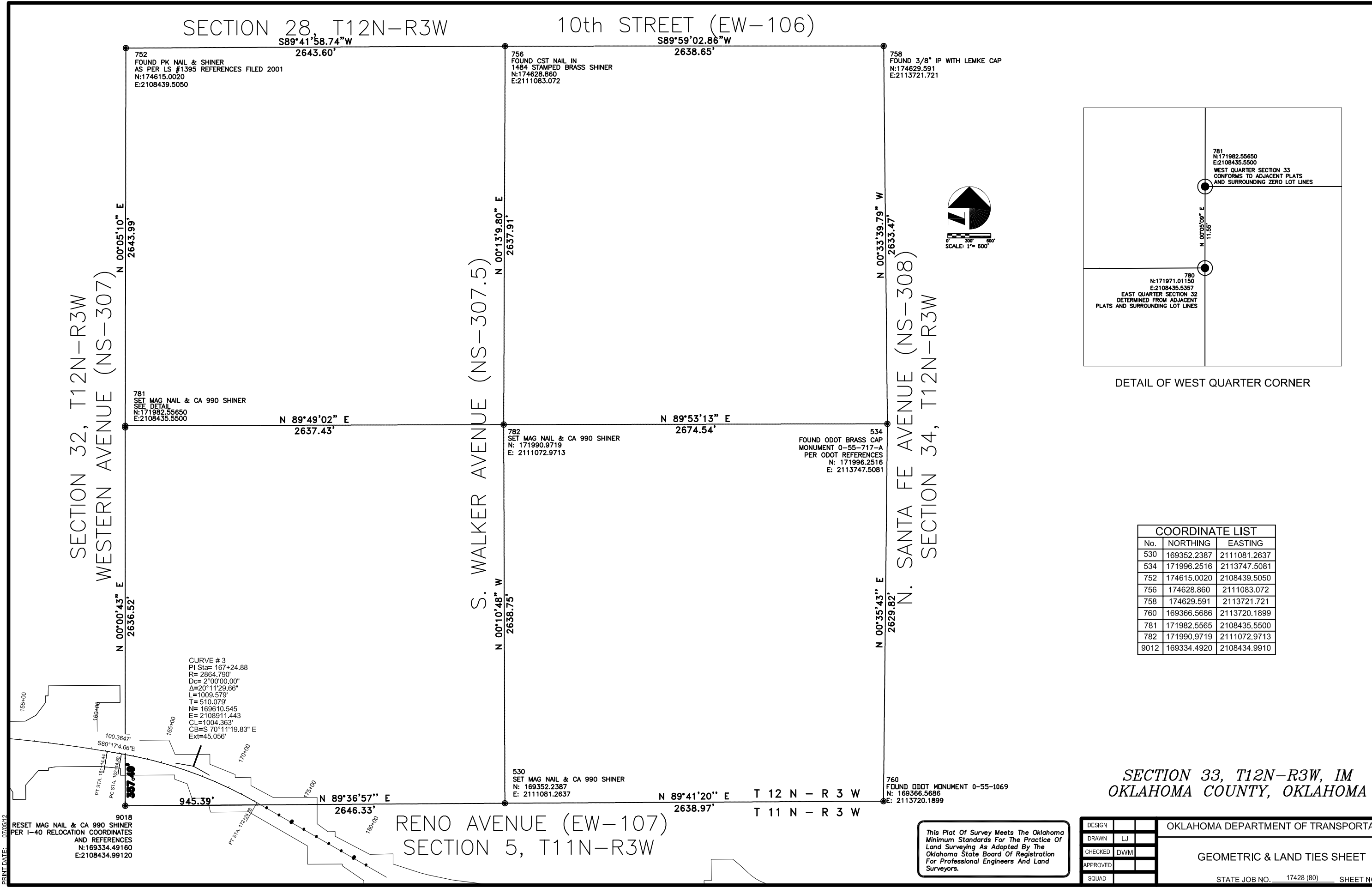
SECTION 28, T12N-R3W

10th STREET (EW-106)

SECTION 32, T12N-R3W  
WESTERN AVENUE (NS-307)

S. WALKER AVENUE (NS-307.5)

N. SANTA FE AVENUE (NS-308)  
SECTION 34, T12N-R3W



752  
FOUND PK NAIL & SHINER  
AS PER LS #1395 REFERENCES FILED 2001  
N:174615.0020  
E:2108439.5050

756  
FOUND CST NAIL IN  
1484 STAMPED BRASS SHINER  
N:174628.860  
E:2111083.072

758  
FOUND 3/8" IP WITH LEMKE CAP  
N:174629.591  
E:2113721.721

781  
SET MAG NAIL & CA 990 SHINER  
SEE DETAIL  
N:171982.55650  
E:2108435.5500

782  
SET MAG NAIL & CA 990 SHINER  
N: 171990.9719  
E: 2111072.9713

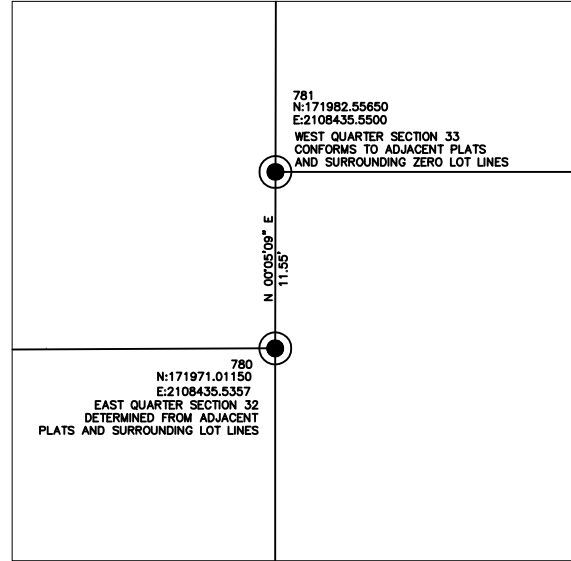
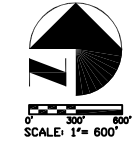
534  
FOUND ODOT BRASS CAP  
MONUMENT 0-55-717-A  
PER ODOT REFERENCES  
N: 171996.2516  
E: 2113747.5081

530  
SET MAG NAIL & CA 990 SHINER  
N: 169352.2387  
E: 2111081.2637

760  
FOUND ODOT MONUMENT 0-55-1069  
N: 169366.5686  
E: 2113720.1899

9018  
RESET MAG NAIL & CA 990 SHINER  
PER I-40 RELOCATION COORDINATES  
AND REFERENCES  
N:169334.49160  
E:2108434.99120

CURVE # 3  
PI Sta= 167+24.88  
R= 2864.790'  
Dc= 2°00'00.00"  
Δ=20°11'29.66"  
L=1009.579'  
T= 510.079'  
N= 169610.545  
E= 2108911.443  
CL=1004.363'  
CB=S 70°11'19.83" E  
EX=45.056'



DETAIL OF WEST QUARTER CORNER

COORDINATE LIST		
No.	NORTHING	EASTING
530	169352.2387	2111081.2637
534	171996.2516	2113747.5081
752	174615.0020	2108439.5050
756	174628.860	2111083.072
758	174629.591	2113721.721
760	169366.5686	2113720.1899
781	171982.5565	2108435.5500
782	171990.9719	2111072.9713
9012	169334.4920	2108434.9910

SECTION 33, T12N-R3W, IM  
OKLAHOMA COUNTY, OKLAHOMA

RENO AVENUE (EW-107)  
SECTION 5, T11N-R3W

This Plat Of Survey Meets The Oklahoma Minimum Standards For The Practice Of Land Surveying As Adopted By The Oklahoma State Board Of Registration For Professional Engineers And Land Surveyors.

DESIGN	
DRAWN	LJ
CHECKED	DWM
APPROVED	
SQUAD	

OKLAHOMA DEPARTMENT OF TRANSPORTATION	
GEOMETRIC & LAND TIES SHEET	
STATE JOB NO.	17428 (80)
SHEET NO.	S4

PRINT DATE: 07/08/12